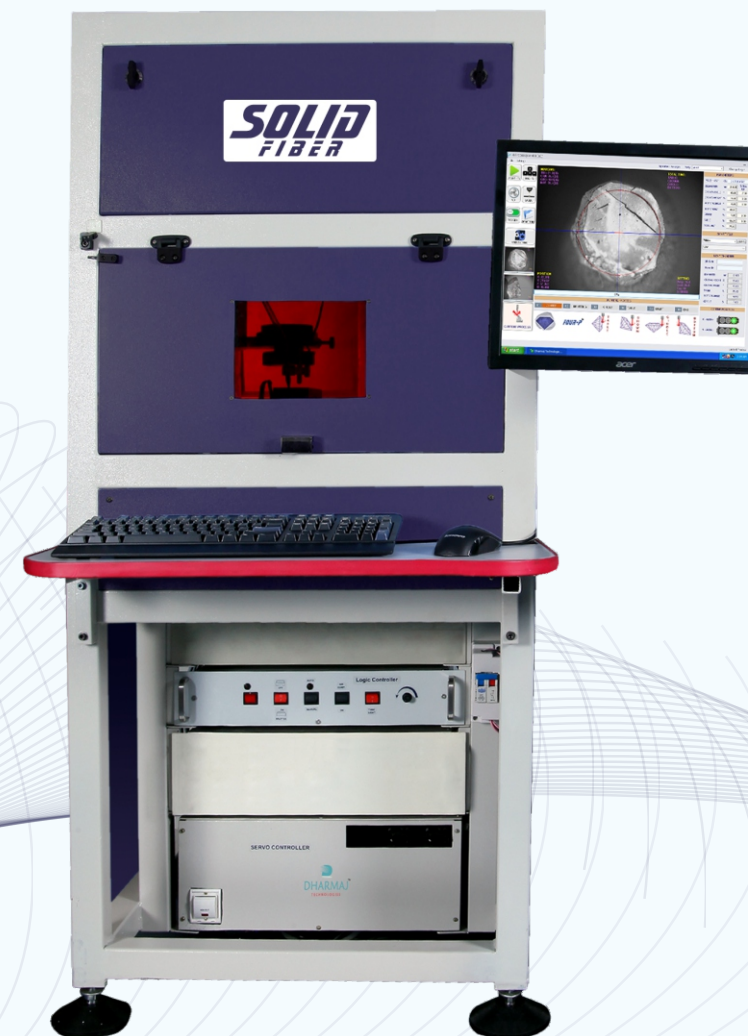


SOLID FIBER



• Innovation • Teamwork • Service •



Contact Us

Plot No.273, Surat Special Economic Zone,
Sursez, Sachin, Surat-394230, Gujarat,
INDIA.

+91 261 2397706 / 08 + 91 96877 55755

dharmajexports@gmail.com www.dharmaj.in

Follow us on



Manufacturing Laser & Automation Solutions

Model DEL-14 CNC Laser Diamond Cutting Machine

Shown content with photographs in this document are associated with "Dharmaj" Group of Companies.

© Copyright April-2023 Dharmaj Exports All Rights Reserved.

www.dharmaj.in dharmajexports@gmail.com

Optical

Properties

Laser Model & Type	MOPA & Q-Switched Fiber
Average Power	15W
Pulse Energy	1.5mJ
Frequency	1-50Khz
Pulse Width Range	200ns
M2	<1.8
Center Wavelength	1064nm
Output Power Stability	<3%
Tunable Power Range	0-100%
FWHM (nm) @3dB	<15nm
Polarization	Random
Anti-Reflection Protection	Yes
Beam Diameter (mm)	6mm
Output Fiber Length	1.5m
Supply Voltage	24V
Power Consumption	<150W

Machine

Specification

Axis Travel	130*130*70mm
Accuracy	2 Micron
Repeatability	5 Micron/25mm Bidirectional
Straightness & Flatness of Travel	5 Micron/25mm
Drive	AC Servo
Power Consumption	1 Ø, 230 Volts, 1.5 Amps
Operating Temperature	0 - 30°C
Length * Width * Height Weight	940mm x 635mm x 1397mm 300kg ~

PC Specification

Intel 4th Generation, 17" LED Screen
Dual Core Processor OR **Higher Configuration**

Machine other features

- Calibration Free Software
- **Smart cutting Parameters**
 - ▶ For Process specific (**Table, Crown, Girdle, Pavillion**)
Auto Power, Angle Frequency facility
 - ▶ Diameter wise Auto cutting file & margin cutting facility
- Smart Parameter facility for "**HEIGHT STONES / PALCHA**" type rough
- Servo motor used in fixture for Precise Positioning
- **Efficient CNC System** thus Smooth Cutting.
- Direct Data Transfer.
- **Diameter wise** Automatic power adjustment.

Upgraded Software Features

- Live Photo for current set stone.
- **Live center position** for maintaining accuracy.
- **Hardware & Hasp lock** in all functions for preventing your current setting data.
- Easy and **Highly accurate Calibration** process for better **Quality of shape** for longer duration.
- All kind of **Data importing** Facility in one software (**QR Code, LAN, Eagleye, etc.**).
- **Auto camera spot** checking function.
- **Fastest ever software** for Quality Production.
- **Percentage wise power increase/decrease** facility in all process.
- **Diameter wise** smart margin facility.
- You can easily store cutting stone data with image and parameter according to **Operator and Party wise**.
- Automatic and Manual Excel file export facility available with **CSV format**.
- **Double side** table Sawing image can be save through **Enter key** use.
- Minimum 10 Days back-up Data available.
- In Machine "**Girdle**" and "**Table**" marking facility.

Key Features

- Having "**SOLID**" save **space** up to **50%**
- Working with "**SOLID**" save up to **85%** in **Electricity bill**
- Though smallest "**SOLID**" is **Robust** and **Vibration free**
- **Ergonomically** designed structure for **Hassle free service**