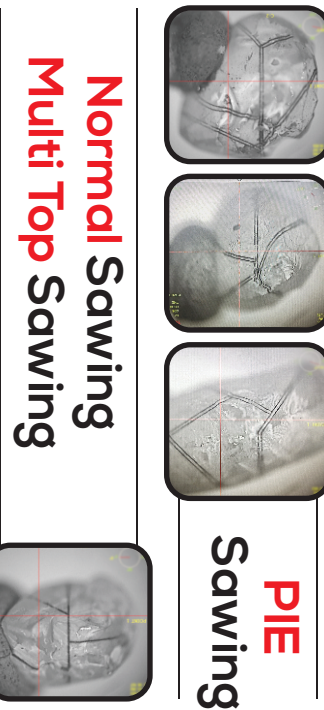
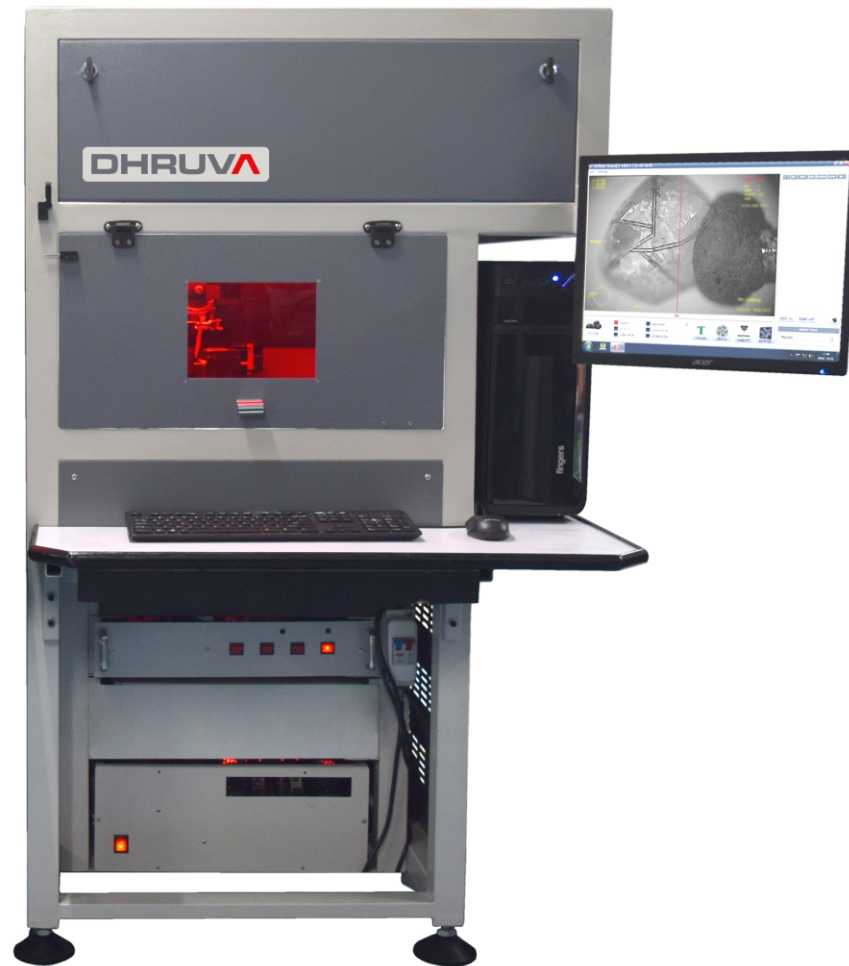


Powered by

## Upgraded Fiber Laser

All In One **Multi Sign Cutting** Machine



**DHRUVA**

**In Fiber IR get weight loss like Green Laser.**

### Laser Specification

Laser Model & Type MOPA or Q-Switch Fiber Laser

### Machine Specification

#### CNC System

Axis Travel	130*130*70mm
Accuracy	2 Micron
Repeatability	5 Micron/25mm Bidirectional
Straightness & Flatness of Travel	5 Micron/25mm
Drive	AC Servo

#### Electrical

#### Temperature

Power Consum. 1 Ø, 230 Volts, 1.5 Amps Operating Temp. 0-30°C

#### PC Specification

#### Dimension

Intel 4<sup>th</sup> Generation, 17" LED Screen Len \* Wid \* Hei. 36" x 36" x 60"  
Dual Core Processor OR Higher Configuration Weight ~300kg

- "Upgraded" Fiber Laser sources result in minimal **weight loss**.
- Smooth surface finishing.
- **Save** on electricity bills and is **maintenance free** compared to diode laser.
- Safety **password/Hasp** lock facility is available for "Cutting Parameter" files.
- Stores images of Rough Diamonds to recheck errors.

### Manufacturing Laser & Automation Solutions

+ 91 99798 85545 / 98793 74747 / 99797 30788 +91 261 2567273 / 2547373

Plot No.104, Nr.Dharmaj Circle, Dharmaj Compound, A.K.Road, Surat-395008, Gujarat, INDIA.

www.dharmaj.in contact@dharmaj.in Follow us on

Shown content with photographs in this document are associated with "Dharmaj Technologies" & Group Companies.