

Coring & Slicing



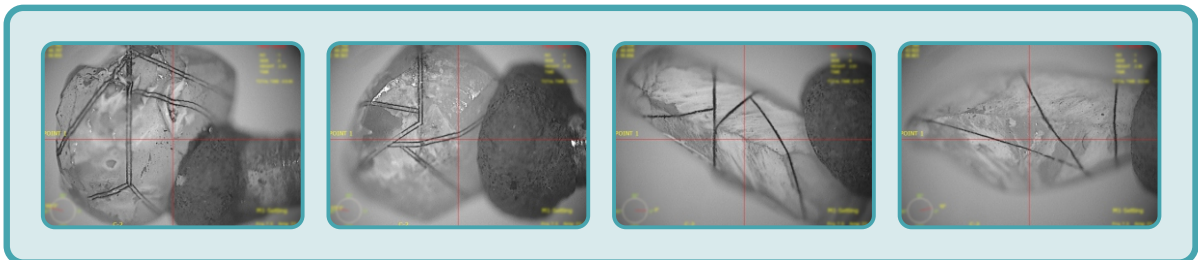
2D Shape Cutting

- Highly Accurate Shape Cutting of Standardized **Fancy Shapes**.



PIE & Multi Top Sawing

- Highly Accurate Multi Side Sawing in **Single Sticking**.

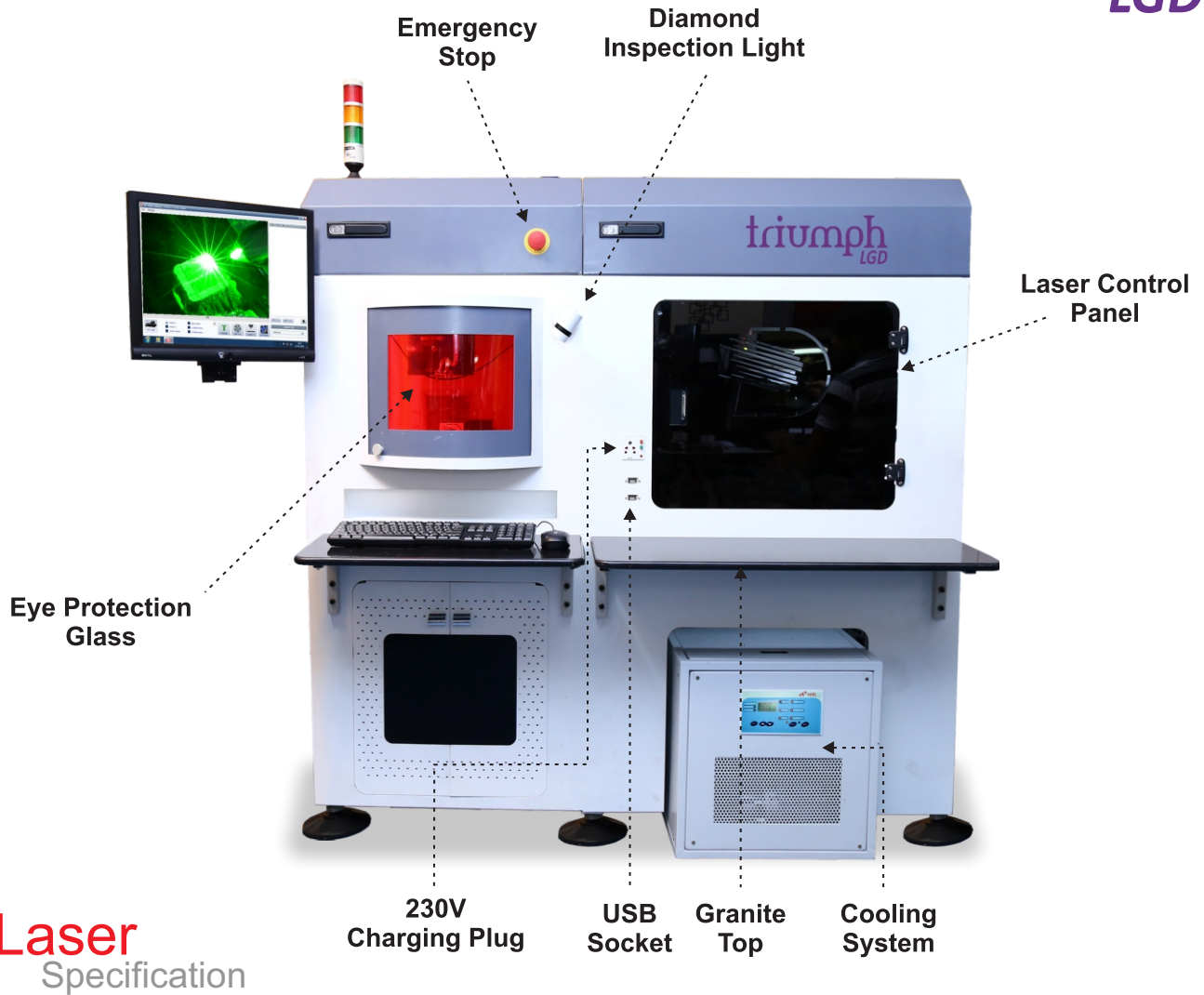


Manufacturing Laser & Automation Solutions



Machine Specification

Main Supply	230VAC - 10 AMP, 1 Phase
Computer System	Intel Core i3 Processor, 4GB RAM, 1TB HDD 450 Watt SMPS, 17" Square LCD Screen
Cooling System	1200 Watt Cooling Capacity, German Brand PUMP, Nickel Coated, Heat Exchanger, All SS Fittings, 0.1 Degree Temperature Control Range
Power Supply (Diode Driver)	30 AMP - 30 Volts DC, High Stability Power Control
RF Q-Switch Driver	27MHZ, 50 Watt Output Power, Modulation Frequency Auto, Manual 1k to 25KHZ Frequency Range, Thermal cut off protection, FPS system
TEC LBO Controller	0.1 Degree Control Capacity, 18 to 45 Degree Temperature Range
CNC System - 1 & 2	AC Servo 200 Watt Control Drive, Highly Accurate & Long Lasting 23 Bit Resolution Axis Travel X-Axis : 165mm, Y-Axis : 165mm, Z-Axis : 70mm Accuracy - 2 Micron
Dimension of Machine 	Length - 1500mm * Width - 800mm * Height - 1400mm Weight - 900kg ~



Laser	DPSS (ND : YAG) Green Laser
Diode Module	Northrop Grumman "IKLWA" Laser Head or "Indigenous make Green Laser Head"
Central Emission Wavelength	532nm
Transverse Mode	TEM ₀₀
Q-Switched Output Power	Upto 22 Watt at 9KHZ
Beam Polarization	Vertical / Linear
Repetition Rate	6 - 20KHZ
Pulse Width	FWHM<80ns



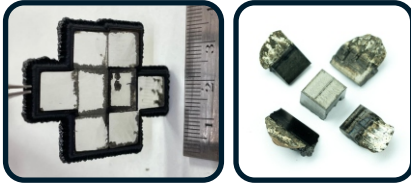
Multi Focal Banding Facility
for Cubes type Stone

Profile Banding Facility
for Flat type Stone



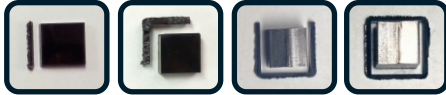
Lab Grown Processing with Green Laser

Coring - DLC Remove



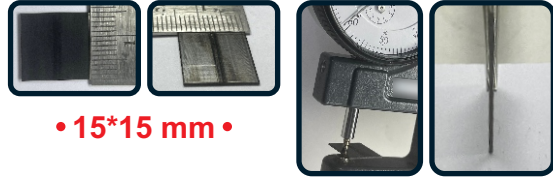
- Single piece & **Biscuit** cutting
- Smooth **Surround** surface

Cut in any **Pattern**



- **Adjustable** opening
(Inside, outside or center)

Slice Cutting



• 15*15 mm •

• 600 Micron •

Size	Opening
7x7mm	70 micron
10x10mm	100 micron
12x12mm	120 micron
15x15mm	170 micron

- Smooth surface
- **Minimum opening loss & get more Slice**


DHARMAJ[®]
TECHNOLOGIES

• Innovation • Teamwork • Service •

+ 91 99798 85545 / 99799 57373 +91 261 2567273 / 2547373

 Plot No.104, Dharmaj compound, Nr. Dharmaj Circle, Opp.T.B.Hospital, A.K.Road, Surat-395008
Gujarat, India.  www.dharmaj.in  contact@dharmaj.in Follow us on     

ડોક્યુમેન્ટમાં દર્શાવેલા ફોટોગ્રાફ સાથેની વિગતો ધર્મજ ટેકનોલોજીસ અને એસોસિયેટ કંપની સાથે જોડાયેલ છે.

© Copyright Dec-2022 Dharmaj Technologies All Rights Reserved. Patent Pending. (પેટન્ટ રજીસ્ટ્રેશન કાર્યવાહીમાં છે.)